



YENİBOSNA MERKEZ MAH. KAYALAR SK.
NO: 3/B BAHÇELİEVLER / İSTANBUL

90 534 247 61 22

dtfmakine.com

QUAJET

Sinage Printer Series

One-stop printing applications manufacturer

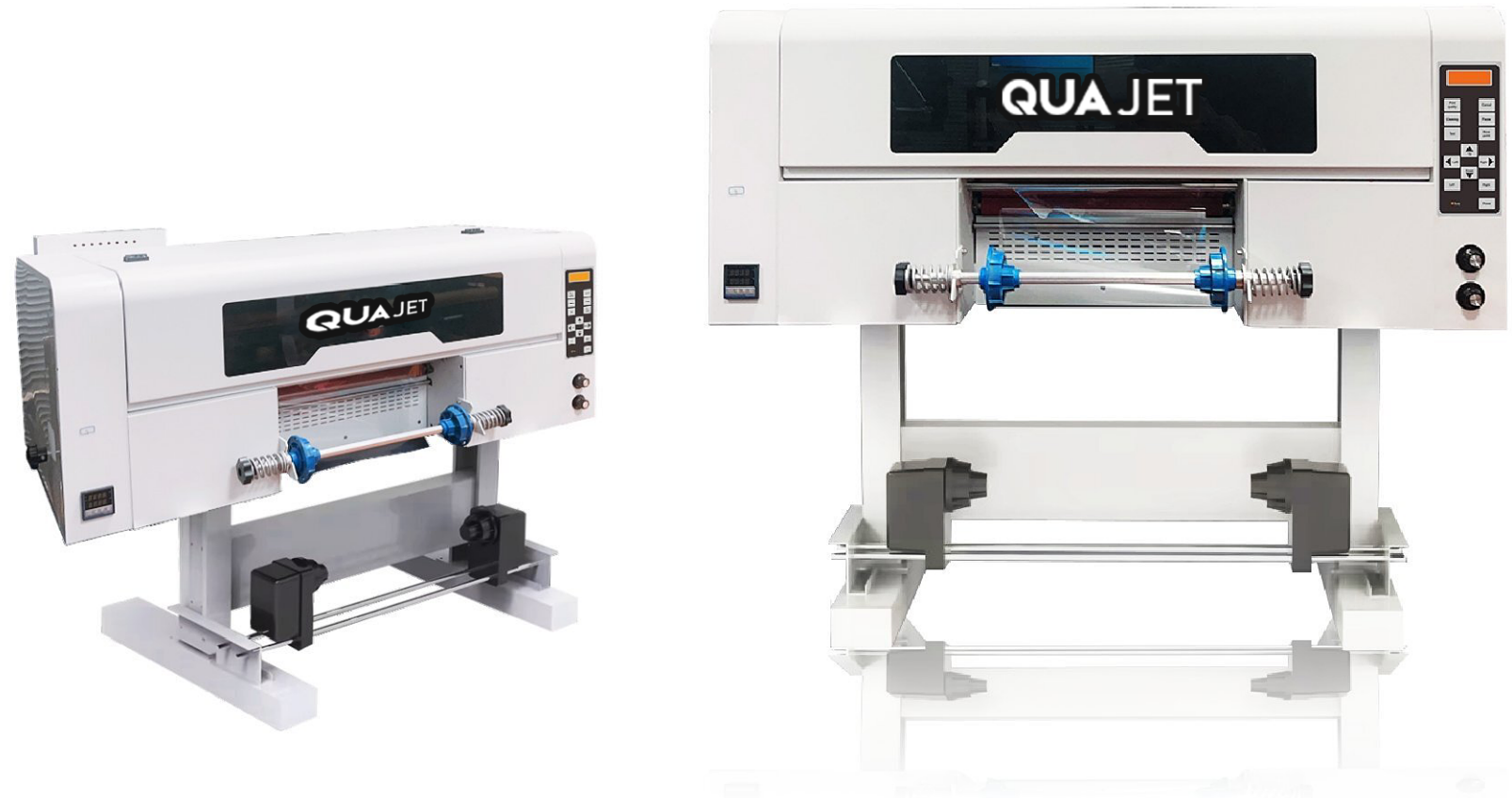
UV DTF/Eco/Flags/UV RTR/UV Hybrid

QUAJET
One-stop Printing
applications manufacturer



QUA-UV DTF A3

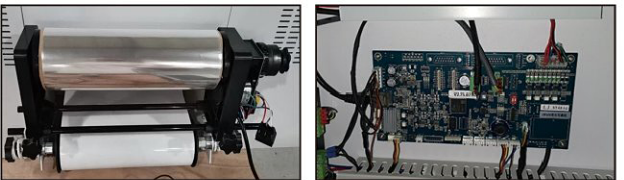
With 2-3 pcs Epson XP600 heads



Machine Specification

Model No.	QUA-A3 UV DTF	Max Print Size	300mm
Max Print Height	2mm	Power Consumption	500W
Printer Head	2-3pcs Epson Xp600		
Board	Hoson		
Printing Speed	2 heads:	3 heads:	
	4PASS:3 m ² /h	4PASS:4.5 m ² /h	
	6PASS:2m ² /h	6PASS:3m ² /h	
	8PASS:1.5m ² /h	8PASS:2.5m ² /h	
Materials to Print	UV DTF A/B film		
Ink Colors	CMYKWW		
File Format	TIFF,JPEG,PDF		
Software	Maintop 6.1/Photoprint/RIPprint		
Working Environment	Temperature: 20-32°C Humidity: 40-75%		
Machine Size&Net Weight	1000*500*450mm; 50kgs		

Product details



Automatic Feeding System

Mainboard



Shortage Alarm system

Control Panel



Powder Box

Suction Platbed



QUAJET
One-stop Printing
applications manufacturer



QUA-UV DTF A1

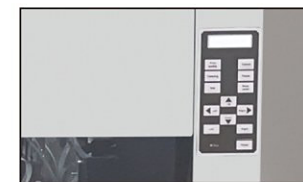
With 3-4 pcs Epson I1600/I3200



Machine Specification

Model No.	QUA-A1 UV DTF	Max Print Size	650mm
Max Print Height	2mm	Power Consumption	1800W
Printer Head	3/4 PCS Epson I1600/I3200		
Board	Hoson		
Printing Speed	1600:	3200:	
	8PASS: 5.5m ² /h	4PASS: 8m ² /h	
	12PASS: 3.5m ² /h	6PASS: 5.5m ² /h	8PASS: 4m ² /h
Printing Resolution	720*1200dpi; 720*1800dpi; 720*2400dpi		
Ink Colors	CMYK+W+V		
File Format	TIFF, JPEG, PDF		
Software	Print Factory/Photoprint		
Working Environment	Temperature: 20-32°C Humidity: 40-75%		
Machine Size&Net Weight	1830*940*1720mm; 180kgs		

Product details



Control panel



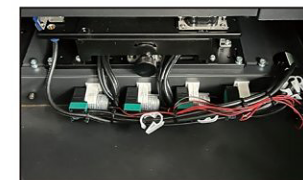
Servo motor



Vacuum platform



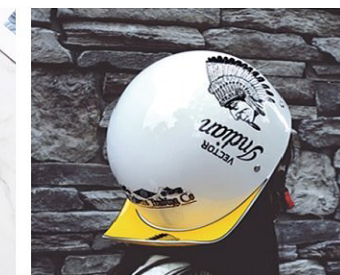
2.0 THK guide



Lifting ink stack



Take-up System



QUA-ECO 1801H

With 1 pc Epson I3200 E1/ XP600 Print head



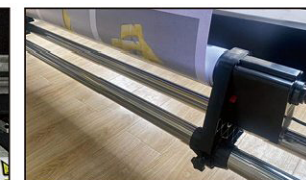
Machine Specification

Model No.	QUA-ECO1801H	Max Print Size	70" (180cm)
Max Print Height	2mm	Power Consumption	3500W
Printer Head	1 Epson XP600 / I3200 printhead		
Printing Resolution	Standard Dpi: I3200: 720×1200dpi XP600: 360*1440dpi		
Printing Speed	I3200-E1: 720*1200dpi,4Pass 16 sqm/h, 720*2400dpi,6 Pass 12 sqm/h Xp600: 360*1440dpi,4Pass 10 sqm/h , 360*2160dpi,6 Pass 8 sqm/h		
Printing Quality	True Photographic Quality		
Ink Colors	CMYK		
File Format	TIFF,JPEG,Postscript,EPS,PDF		
Software	Maintop/Photoprint		
Working Environment	15-30 Degrees.		
Machine Size&Net Weight	2688mm * 725mm *1340(H)mm ; 150kg		

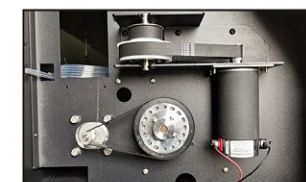
Product details



Carriage



Collector



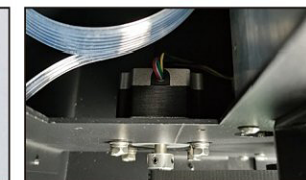
DC motor



Fans



Panel



Step motor



QUA-ECO 1801E/1802E

With 1/2 pcs Epson I3200 E1/ XP600/DX5



Machine Specification

Model No.	QUA-ECO1801E/1802E	Max Print Size	70" (180cm)
Max Print Height	1-2mm	Power Consumption	1500W- 1900W
Printer Head	1 Epson I3200-E1/XP600 / 2 Epson I3200-E1/XP600		
Printing Resolution	Standard Dpi: 720×1200dpi		
Printing Speed	1801E: I3200-E1:720*1200dpi,4Pass 20 sqm/h, 720*2400dpi,6 Pass 14 sqm/h XP600: 360*1440dpi,4Pass 12 sqm/h , 360*2160dpi,6 Pass 8 sqm/h		
Printing Quality	True Photographic Quality		
Ink Colors	CMYK		
File Format	PDF,JPG,TIFF,EPS,AI,etc		
Software	PhotoPrint/Ripprint		
Working Environment	20-28 Degrees.		
Machine Size&Net Weight	2827*770*1478mm; 150kg		

Product details



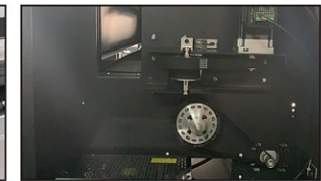
Stable bulk system



Display board



Two-foot pinch rollers



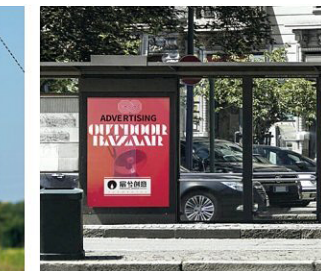
High quality DC servo motor



Exterior heating



Collector



QUA-ECO 1802/1804PRO

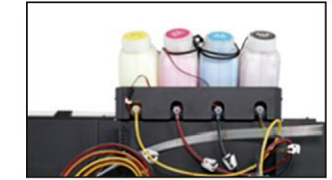
With 2/4 pcs Epson I3200 E1Print heads



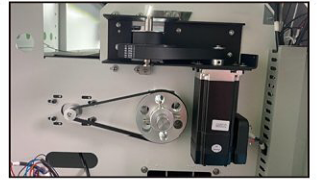
Machine Specification

Model No.	QUA-ECO1802 PRO/OM-ECO1804 PRO	Max Print Size	70" (180cm)
Max Print Height	1-5mm	Power Consumption	1500W; 4000W
Printer Head	2pcs/4pcs I3200 Print Head		
Printing Resolution	Standard Dpi: 720×1200dpi / 720*2400dpi		
Printing Speed	(720*2400dpi) 2pcs I3200 head: 4pass 40sqm/h 6pass 30sqm/h 4pcs I3200 head: 4pass 82sqm/h 6pass 56sqm/h		
Printing Quality	True Photographic Quality		
Ink Colors	CMYK		
File Format	PDF,JPG,TIFF,EPS,AI,etc		
Software	Sai PhotoPrint/Ripprint		
Working Environment	20-28 Degrees.		
Machine Size&Net Weight	3025*824*1476mm; 280kgs		

Product details



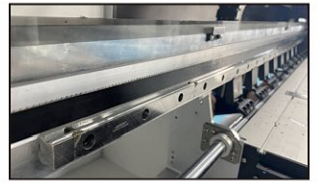
Bulk ink system



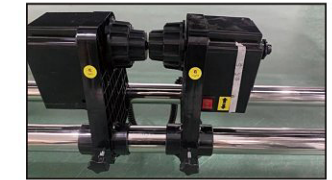
Servo motor



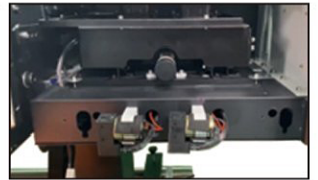
Three foot pinch rollers



Hiwin guide



Collector



Lifting automatically capping station



QUAJET
One-stop Printing
applications manufacturer



QUA-ECO 1802/1804PLUS

With 2/4 pcs Epson I3200 E1Print heads



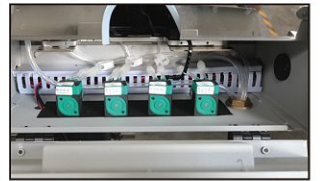
Machine Specification

Model No.	QUA-ECO1802PLUS /OM-ECO1804 PLUS		Max Print Size	1900mm
Max Print Height	1-2mm		Power Consumption	1500W; 4000W
Printer Head	2/4 pcs Epson I3200 E1 Print Head			
Printing Resolution	Standard Dpi: 720×1200dpi			
Printing Speed	ECO1802Plus : 4pass: 30sqm/h 6pass: 20sqm/h	ECO1804 Plus: 4pass: 60sqm/h 6pass: 40sqm/h		
Printing Quality	True Photographic Quality			
Ink Colors	4 Color: CMYK / 8Color: CMYK LC LM LK Ilk			
File Format	TIFF, JPEG, Postscript, EPS, PDF			
Software	Maintop/Photoprint/ONYX/Colorgate			
Working Environment	15-30 Degrees.			
Machine Size&Net Weight	3050*850*1410(H)mm; 280kgs			

Product details



Anti-Collision Device



Ink pump



Milling Briage



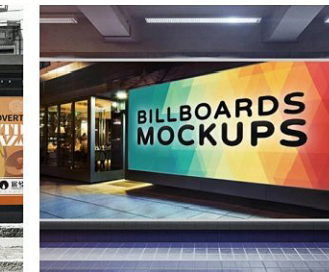
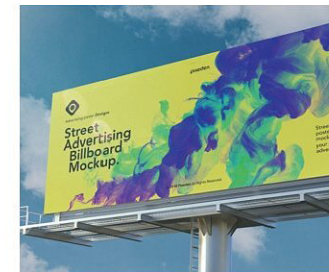
Printing Area



THK Guide



Three Feet Pinch Rollers



QUA-ECO 3204PRO

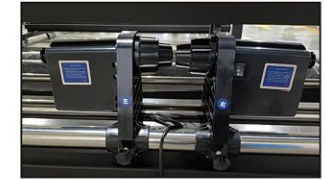
With 4 pcs Epson I3200 E1 Print heads



Machine Specification

Model No.	QUA-ECO3204PRO	Max Print Size	125.98" (3200mm)
Max Print Height	1-5mm	Power Consumption	8500W
Printer Head	4 pcs Epson I3200 E1 Print Head		
Printing Resolution	Standard Dpi: 1440*2880dpi		
Printing Speed	4 heads I3200 speed: 2Pass: 150 sqm/h 4Pass: 80 sqm/h 6Pass: 55 sqm/h		
Printing Quality	True Photographic Quality		
Ink Colors	CMYK		
File Format	TIFF, JPEG, Postscript, EPS, PDF		
Software	Maintop/Photoprint		
Working Environment	15-30 Degrees.		
Machine Size&Net Weight	4424*907*1530(H)mm; 750kgs		

Product details



Double moter take up system



Bulk Ink System



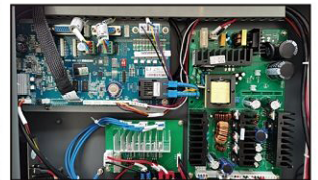
Exterior Heater



Hiwin guide



Ink tation



Hiwon Board



QUA-FLAG 1804A/2204A/3204A

With 4 pcs Epson I3200 Print Heads



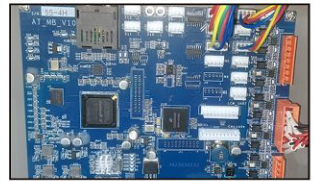
Machine Specification

Model No.	QUA-FLAG1804A/2204A/3204A	Media length	1600/2000/3200mm
Guide Rail	Width: 20MM	Power Consumption	1500W
Printer Head	4pcs Epson I3200 Print Heads		
Stepper motor	KAMEILO		
Pinch roller type	1804A: 3pcs, can be lifted, 11 sets 2204A: 3pcs, can be lifted, 13 sets 3202A: 3pcs, can be lifted, 21 sets		
Printing Speed	1804A: 2pass: 130sqm/h 3pass: 100sqm/h 4pass: 85sqm/h 2204A: 2pass: 140sqm/h 3pass: 110sqm/h 4pass: 95sqm/h 3204A: 3pass: 120sqm/h		
Ink Colors	CMYK		
Rubbe roller	80*1795/80*2145/110*3295 Rubbe roller driver		
Software	Maintop 6.1		
Working Environment	Temperature 17°C--23°C, humidity 40%-50%		
Machine Size&Net Weight	4800*970*1640mm; 1250kgs		

Product details



Printing Platform



Mainboard



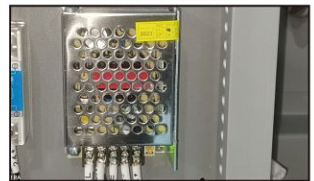
Capping Station



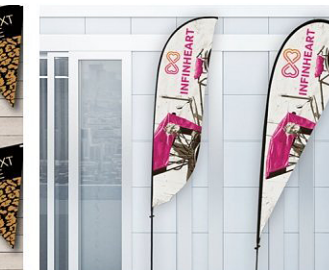
Control Panel



Feeding&Collection System



Power Box



QUA-UR 1801H

With I3200-U1



Machine Specification

Model No.	QUA-UR1801H	Max Print Size	70" (180cm)
Max Print Height	1-2mm	Power Consumption	1500W
Printer Head	I3200-U1		
Printing Quality	True Photographic Quality		
Printing Speed	4pass: 9sqm/h 6pass: 7.5sqm/h 8pass: 6sqm/h		
Ink Type	UV Ink		
Ink Supply	1.5L ink tank with positive pressure continuous supply (Bulk ink system)		
File Format	PDF,JPG,TIFF,EPS,AI,etc		
Software	PhotoPrint/Ripprint		
Working Environment	20-28 Degrees.		
Machine Size&Net Weight	2688*725*1340mm ; 150Kg		

Product details



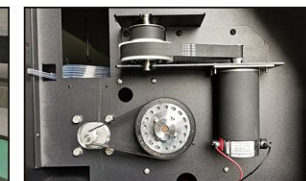
Stable bulk system



Display board



Two-foot pinch rollers



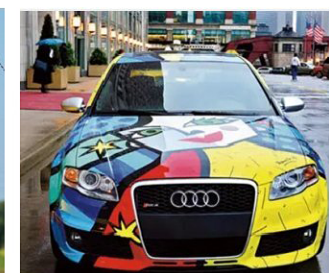
High quality DC moter



Air Cooling



Collector



QUA-UR 1802E

With 2pcs Epson I1600-U1 Print heads



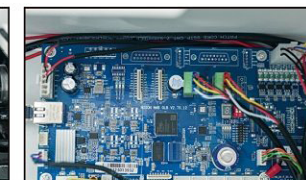
Machine Specification

Model No.	QUA-UR1802E	Max Print Size	70" (180cm)
Max Print Height	1-2mm	Power Consumption	Machine rated power: 1500W; External drying power: 1900W
Printer Head	2pcs Epson I1600-U1		
Printing Quality	True Photographic Quality		
Printing Speed	6pass 6sqm/h 8pass 4.5sqm/h		
Ink Colors	CMYK+W		
Ink Supply	1.5L ink tank with positive pressure continuous supply (Bulk ink system)		
File Format	PDF,JPG,TIFF,EPS,AI,etc		
Software	PhotoPrint/Ripprint		
Working Environment	20-28 Degrees.		
Machine Size&Net Weight	2827*770*1478mm ; 150kg		

Product details



Lifting Capping Station



Hoson Mainboard



Hiwin Guiderail



Carriage Anti-collision



UV Light Box



Industrial Pinch Rollers



QUA-UR 1804PRO

With 4pcs Epson I3200 Print heads



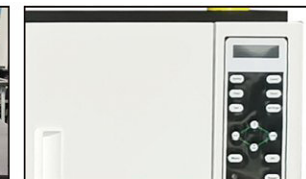
Machine Specification

Model No.	QUA-UR1804PRO	Max Print Size	70" (180cm)
Max Print Height	1-5mm	Power Consumption	1500W
Printer Head	4pcs I3200 Print Head		
Printing Quality	True Photographic Quality		
Printing Speed	4pcs I3200 head : 720*1200dpi 4pass 16sqm/h 720*2400dpi 6pass 13sqm/h		
Ink Colors	CMYK+W+V		
Printing Resolution	4pass: 720*1200dpi 6pass: 720*2400dpi		
File Format	PDF,JPG,TIFF,EPS,AI,etc		
Software	Sai PhotoPrint/Ripprint		
Working Environment	20-28 Degrees.		
Machine Size&Net Weight	3025*824*1476mm ; 280kg		

Product details



Stable bulk system



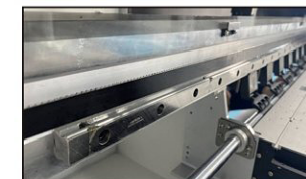
Display board



Two-foot pinch rollers



High quality DC servo motor



Hiwin guide



Collector



QUA-UR 3204PRO

With 4pcs Epson I3200 Print heads



Machine Specification

Model No.	QUA-UR3204PRO	Max Print Size	3100mm
Max Print Height	1-5mm	Power Consumption	2000W
Printer Head	4pcs I3200 Print Head		
Printing Quality	True Photographic Quality		
Printing Speed	2W2C:	4C:	
	4Pass:48sqm/h 6Pass:32sqm/h	4Pass:65sqm/h 6Pass:40sqm/h	
Ink Colors	CMYK+W		
Printing Resolution	4pass: 720*1200dpi 6pass: 720*2400dpi		
File Format	PDF,JPG,TIFF,EPS,AI,etc		
Software	Sai PhotoPrint/Ripprint		
Working Environment	Temperature 15°C--30°C,humidity 40%-60%		
Machine Size&Net Weight	4635*910*1625mm ; 750kg		

Product details



Stable bulk system



Double moter take up system



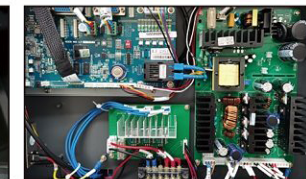
Exterior Heater



Hiwin guide



Ink tation

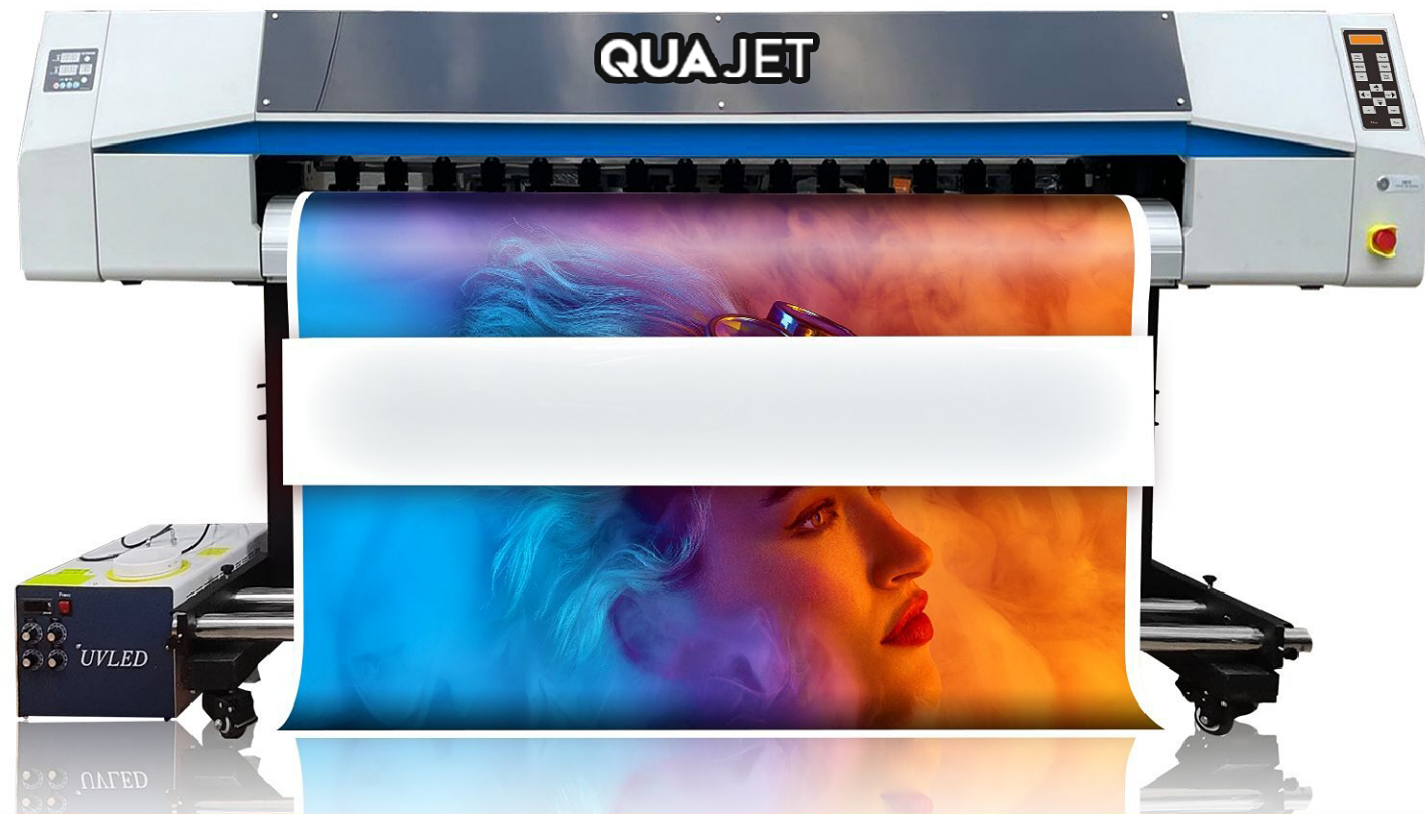


Hoson Board



QUA-UR 1804/2204PLUS

With 4pcs Epson I3200 Print heads



Machine Specification

Model No.	QUA-UR1804/2204PLUS	Max Print Size	1800mm/2200mm
Max Print Height	1-5mm	Power Consumption	1500W
Printer Head	4pcs I3200 Print Head		
Printing Quality	True Photographic Quality		
Printing Speed	4pcs I3200 head : 720*1200dpi 4pass 16sqm/h 720*2400dpi 6pass 13sqm/h		
Ink Colors	CMYK+W+V		
Printing Resolution	4pass: 720*1200dpi 6pass: 720*2400dpi		
File Format	PDF,JPG,TIFF,EPS,AI,etc		
Software	Sai PhotoPrint/Ripprint		
Working Environment	20-28 Degrees.		
Machine Size&Net Weight	3025*824*1476mm ; 280kg		

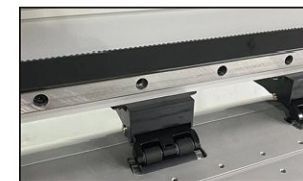
Product details



Stable bulk system



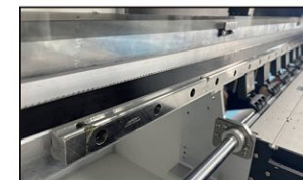
Display board



Two-foot pinch rollers



High quality DC servo motor



Hiwin guide



Collector



QUA-HD 1804E/1804PRO

With 4heads Epson I3200-U1/Ricoh Gen5



Machine Specification

Model No.	QUA-HD1804E/OM-HD1804PRO	Max Print Size	1800mm
Max Print Height	60mm	Power Consumption	Machine:AC 220V 50Hz 1800W Platform adsorption:AC 220V 50Hz 1500W
Printer Head	4 pieces I3200-U1/4 pieces Ricoh Gen5		
Printing Quality	True Photographic Quality		
Printing Speed	1804E: Sketch model: 98sqm/h ; Production model: 60sqm/h ; Sample model: 50sqm/h	1804Pro: Sketch model: 98sqm/h ; Production model: 60sqm/h ; Sample model: 50sqm/h	
Printing Resolution	360*720\720*720\720*1080\720*1440		
Ink Colors	CMYK+W+V		
File Format	PDF,JPG,TIFF,EPS,AI,etc		
Software	Printfactory/SAI PhotoPrint		
Working Environment	Temperature: 27-35°C; Humidity: 40-60%		
Machine Size&Net Weight	3750*1120*1600mm ; 800kgs		

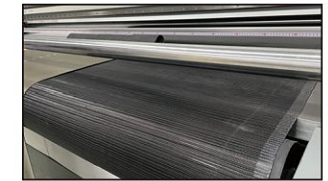
Product details



Air shaft for media feeding and take-up



THK rail



High density fine mesh



Multiple color solutions



Printhead anti-crash device



Separate negative ink control



QUA-HD 2500/3200/5000PRO

With 3-16heads Ricoh Gen5/Gen6/Konica 1024A



Machine Specification

Model No.	QUA-HD2500/3200/5000PRO	Max Print Size	2500/3200/5000mm
Max Print Height	120mm	Power Consumption	Machine:AC 220V 50Hz 1800W Platform adsorption:AC 220V 50Hz 1500W
Printer Head	3~16 pieces Konica		
Printing Quality	True Photographic Quality		
Printing Speed	Ricoh Gen5: Sketch model: 54sqm/h ; Production model: 43sqm/h ; Sample model: 36sqm/h	Ricoh Gen6: Sketch model: 60sqm/h ; Production model: 50sqm/h ; Sample model: 43sqm/h	Konica 1024A Sketch model: 68sqm/h ; Production model: 54sqm/h ; Sample model: 45sqm/h
Printing Resolution	360*720\720*720\720*1080\720*1440 540*720\540*1080\540*1440		
Ink Colors	CMYK+W+V		
File Format	PDF,JPG,TIFF,EPS,AI,etc		
Software	Printfactory/SAI PhotoPrint		
Working Environment	Temperature: 27-35°C; Humidity: 40-60%		
Machine Size	4730*1250*1650mm/5406*1090*1638mm		

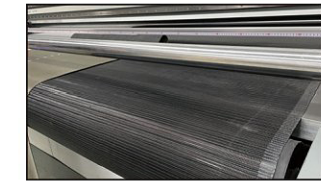
Product details



Air shaft for media feeding and take-up



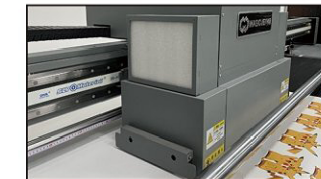
THK rail



High density fine mesh



Multiple color solutions



Printhead anti-crash device



Separate negative ink control

